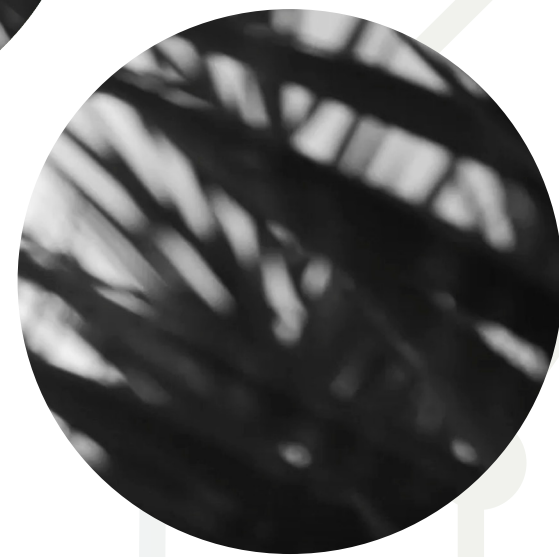


# Lilia Chak

in collaboration with Prof. Olga Kisseleva

## METUSHELAH



### one-channel video

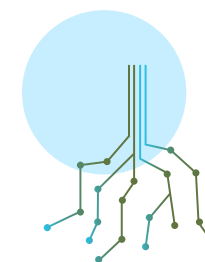
This unique specimen of palm tree, nicknamed "Methuselah" by Israeli scientists, grew 1500 years after the total extinction of its "brothers", thanks to the efforts of the biologist E. Solowey. In Methuselah artist, Lilia Chak, has captured the movement of the leaves of the canopy of the eponymous palm tree. In this way, the artist has created an illusory likeness to the lost ancient forest that grew in the territory of present-day Israel millennia ago. Lilia Chak has limited herself to modest, yet expressive, monochrome, turning the footage into black-and-white graphics.



### Lilia Chak

Lilia Chak is an artist, designer and Bio-art researcher. She explores the intersections of art and biology, exploring new biological technologies as a medium for art. She introduced into the international lexicon the term "Dendro-art" as a new subdivision of Bio-art. She has taken part in Dendro-art exhibitions including Ars Electronica (Linz), BOZAR (Brussels), Matsudo International Science Art Festival (Tokyo), Negev Museum of Art (Beer-Sheva). Her work has been presented internationally in exhibitions, articles and lectures. She teaches "Art, Biology and Ecology" course at SHENKAR since 2001.

METUSHELAH



Our Bio - Tech  
Planet  
Future of Plants and Humans