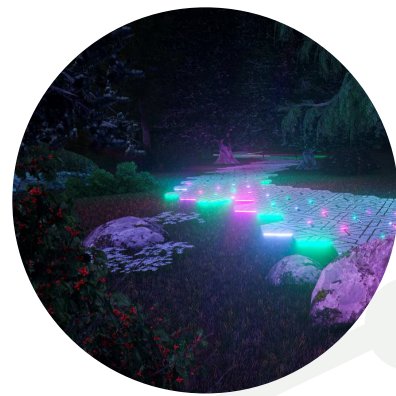


# Ismaele Bonomi

## EYWA



### light and sound installation

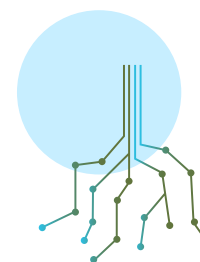
Eywa is a tile system designed to create light paths in forests, parks, and Forest City projects. Thanks to a biosensor connected to the Wood Wide Web of the Eywa location forest Eywa's tiles show in real-time the interactions between plants directly under the feet of those walking the path. This allows users to literally walk on the words of trees. In this way the work creates an interaction between the environment and people, inviting them to play and have a communion experience with trees.



### Ismaele Bonomi

Ismaele is a great lover of the Earth with a particular affection for trees and life under water. He engages the ancient shamanic traditions and customs related to the rhythms of the Earth and the flow of existence in all its forms. He believes that humanity and design have the opportunity to evolve and find a new balance with its source, Pachamama.

EYWA - 3RD PRIZE



Our Bio - Tech  
Planet  
Future of Plants and Humans