

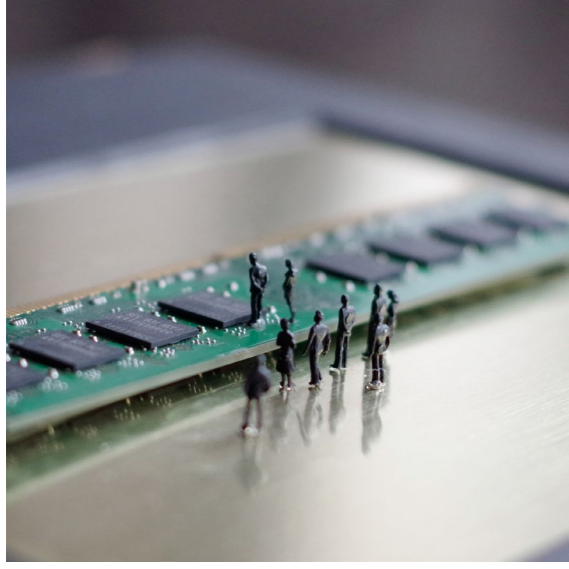
NaturALL IN



**The birth of Venus**

13x13 cm, own technique on cardboard, 2020

TechniCALL IN



**The funeral**

13x17cm, own technique on brass, 2020

MediCALL IN



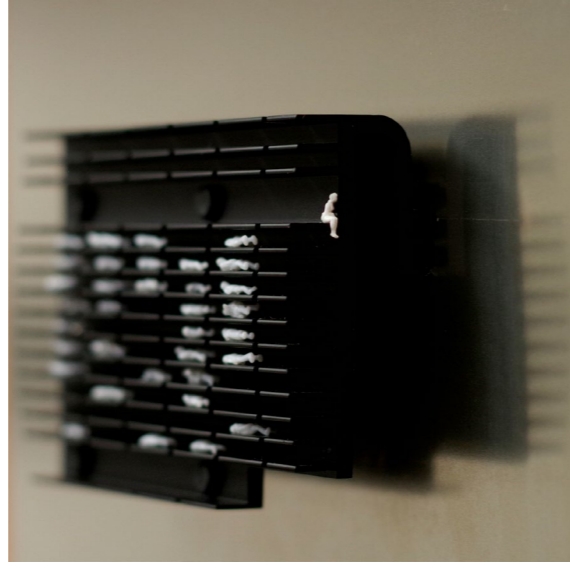
**The birth of Venus**

13x13 cm, own technique on cardboard, 2020



**Friendship**

13x13 cm, own technique on cardboard, 2020



**Awakening**

13x17cm, own technique on steel, 2020



**Friendship**

13x13 cm, own technique on cardboard, 2020



**Paulina Anna Misiak**

born in 1984 in Poznań, Poland. She works in the field of visual arts. Member of The Association of Polish Artists and Designers (ZPAP) and IAA/AIAP (International Association of Art) – UNESCO. She graduated from the Poznań University of Medical Sciences, Faculty of Pharmacy, in 2009. Currently she prepares a master's degree at the Faculty of Art Education and Curatorial Studies at the University of the Arts Poznan and develops research at the Poznan University of Medical Sciences.

She lives and works in Poznań, Poland.



## PAULINA MISIAK

### CALL IN

Going beyond one's own perspective, although conceptually possible, becomes an extremely difficult if not impossible, challenge. In private life, in science or in social awareness alike. What possibility do we have to argue with the concepts if we discuss them only with the help of our own universe of symbolic meanings? What real possibility of forming a critical opinion on our own interpersonal relationships or on a common paradigm do we have?

The series of works constitutes an invitation to make an attempt of going beyond the centrifugal perspective of assessing the reality around us; to look at various issues (related to medicine, technology or nature) from a bird's eye view, both symbolically and literally. This is made possible by the use of miniature figures penetrating various familiar objects in an unusual way. They CALL us IN, invite us to reflect on our situation in the face of disease or treatment, which may concern us both privately and in professional life (MediCALL IN cycle); to reflect on the presence of technology in interpersonal relations (TechniCALL IN cycle) or on the superior role of man over the natural world (NaturALL IN).

